



Fig. S1: Map of British Columbia showing the locations of sampling sites for this study.

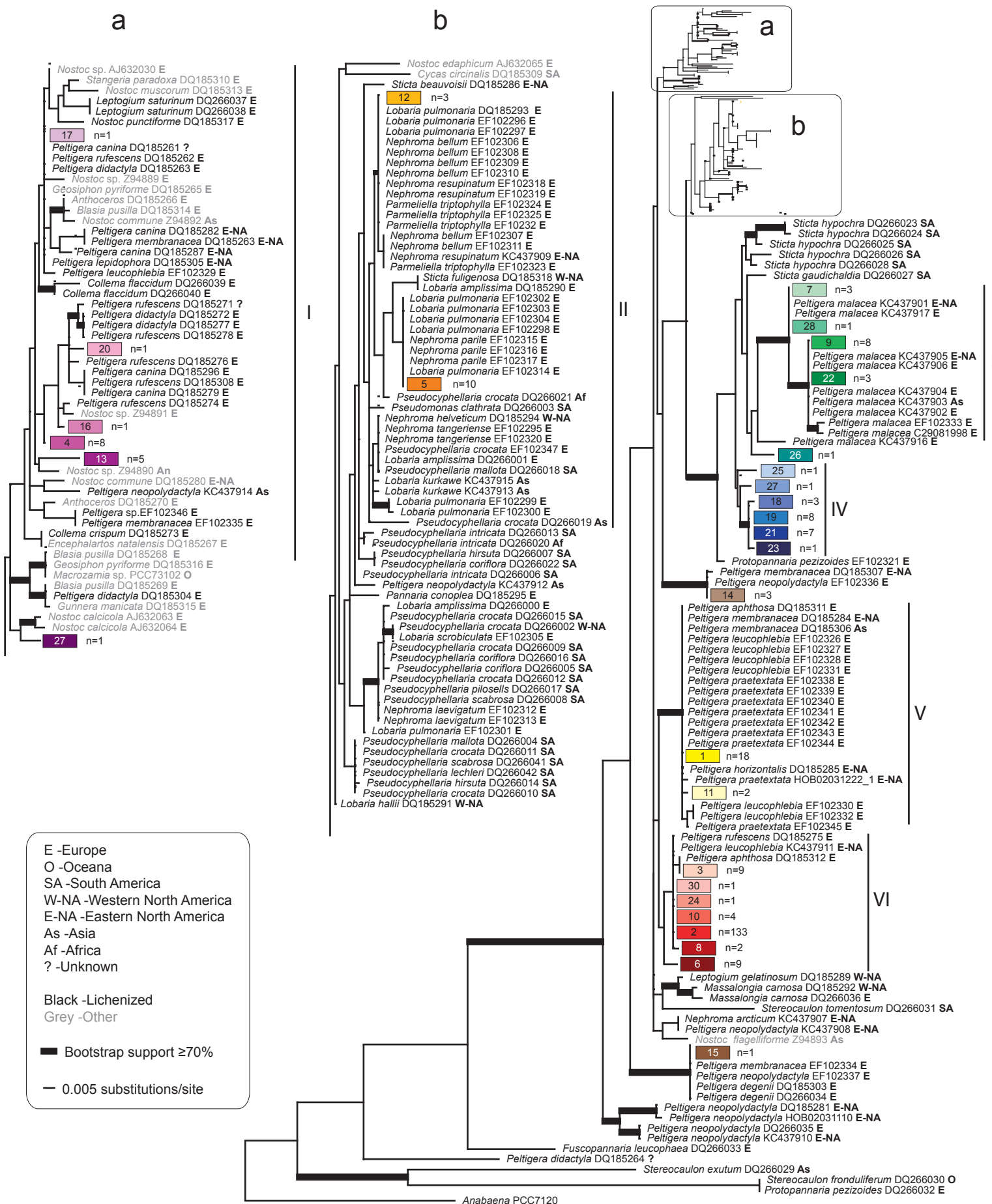


Fig. S2: Phylogenetic placement of photobiont genotypes within *Nostoc* s. str. Phylogeny based on maximum likelihood analysis of *rbclX* sequences. Each colored box represents one photobiont genotype recovered from lichen specimens collected in British Columbia. Numbers inside boxes correspond to the sequence type numbers discussed in the text. The frequency of each sequence type is indicated beside colored boxes.